

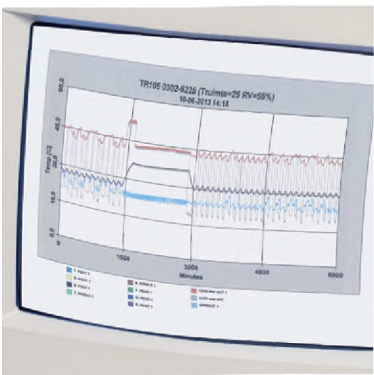


The original
proven
air fluidised
care system





SANDS is our original, proven air fluidised care system and is progressively updated to meet the latest demands



Strict quality control



Secured decontamination hardware



Fluidisation in progress



Detachable control unit



Level adjustment system

Standard properties

- High pH-value (9-11) of the glass beads minimizing bacteria growth.
- Microspherical granulates of sodalime glass beads of 70 - 140 μm .
- Dynamic gravity 1.0 - 1.2 kg/dm^3 at RH35 - 39%.
- Integrated warming and cooling system.
- Ultralow interface pressure.
- One-sided, easy to access control unit with a CPR-button.
- Visual and audible alarms with mute function.
- Generously proportioned multifilament mesh 35 micron polyester cover.

SANDS specifications

- Temperature range adjustable from 30°-38°C, differential +/- 0,1°C.
- Infinitely variable airflow.
- Detachable control unit for easy servicing and remote use (max. 6 meters).
- Safety side rails to protect the tub.

Optional features

- Variable height by an adjustable support frame.
- Built-in decontamination system.

Optional accessories

- Traction support pole.
- Traction support package.
- Air permeable adjustable backrest.
- Adjustable footstep.
- Weighing scale.
- Pantoscope mirror system: to enable the immobile patient to communicate.

Service parts

- Filtersheet, permeability 35 microns.
- Microspherical granulates in 25 kg packing.
- Air filters.

Data sheet



Standard functionality

- Uniform fluidisation due to high performance diffuser board.
- Accurate temperature control.
- Fluidisation pressure adjustable.
- Control system with touch screen panel for easy and intuitive operation.

Mechanical properties

- Level adjustment system for horizontal floor adaption.
- Detachable control unit for use upto 6m distance.
- Full stainless steel tub for infection control.

Exterior

An appealing timeless colour setting and sturdy system design.



Safety side rail

Panel display & CPR

Height adjustment

Castors provided with brakes

Soft rubber rim

Technical data

- Consumption 1500VA max. operational.
- Consumption 4300VA max. auto decontamination (optional).
- Standard 230V, 50 Hz.
- Optimal conditions for proper functioning: 25-30°C, RH55%.
- Hour counter for clinical and technical registration.
- Noise production during full operation 58 dBA.

Mechanical data

- Full stainless steel patient section for clean environment.
- Bed provided with swivel castors for easy transportation, 2 castors provided with a brake.
- Control unit provided with castors for easy transportation.
- Patient weight limit 130 kg*.

Safety features

- Protected against an over temperature of 40°C and higher: audible and visible alarm, fluidisation will interrupt immediately.
- Protected against overload of aircompressor, condensing unit and heating.
- Audible and visible alarm at $> \pm 2^{\circ}\text{C}$ deviation of set temperature. Reset is possible.
- Auto re-start of fluidisation within 30 minutes after power break.
- Strict procedure for decontamination procedure available for authorized staff only.
- Temperature and pressure sensor with incorporated detection to indicate possible defect(s).
- CPR function.
- Pneumatic press-buttons for variable height (optional).

Safety standards

- Designed and approved according to EN60601-1, 3rd edition.
- Certified by Dekra, CE ...*tbc*.
- Built under ISO13485, certificate no. ...*tbc*.
- Application of CFC-free coolant R134A.

Dimensions

- Length: 2540 mm.
- Length without control unit: 2400 mm.
- Width: 940 mm.
- Height: 830 - 1050 mm.

Weight range

- Empty: 350 kg.
- Filled with microspheres: 940 kg.

* *conditional*

Data sheet

 **SYNERGIE**
NEDERLAND
TRUSTED HUMAN CARE



 **SANDS**TM
PROVEN CARE